

The Reynolds Rainbow

Sharing bright news from our school community



William Reynolds Primary School
"To be the best we can be"

Week ending 26th June 2026

Headteacher's Message

Dear Parents and Carers,

What a hot week it has been! ☀️ Despite the soaring temperatures, it has been a wonderfully busy few days filled with sports events and plenty of team spirit.

A huge well done to all the children for giving their absolute best—you have shown fantastic resilience and enthusiasm in challenging conditions. Thank you also to our parents and carers for your continued support and understanding, especially with the adjustments we have needed to make to ensure everyone stays safe in the heat.

Our Senior Leadership Team thoroughly enjoyed cooling children and families down at the end of the day with water pistols—definitely a highlight of the week! And a special (if slightly surprising!) thank you to one parent in particular who decided to tip a whole bucket of ice-cold water over my head when I wasn't looking—I can confirm it was very refreshing, even if I didn't have a change of clothes!

Wishing you all a lovely, restful weekend. ✨

Warm wishes,

Mrs Angeloff
Acting Headteacher



Four Hills
Education Trust



Exploring Nature: Our Patshull Farm Visit



It was so much fun when we visited Patshull Farm last week. My favourite part was when I was chosen to collect some eggs from the chicken house and collecting baby frogs although Phoebe collected a big one.

I loved everything about our visit – we worked in different groups to make `dens and shelters from logs and pieces of wood. It was lovely working collaboratively with lots of different children, including my friends. We learnt which crops were grown on the farm and how they are harvested and the machinery involved. We met and learnt about the animals which was amazing.

We even got to play football at lunchtime which was so much fun! Overall it was the best trip ever!

Georgia Dyson



Sizzling Sports Days



A huge well done to all the children who have taken part in their sports events so far—especially in this incredible heat! We are so proud of their energy, determination and team spirit. Thank you to everyone who came along to cheer them on—your support created such a fantastic atmosphere! And a big thank you for buying our cold drinks too; every purchase is helping us raise money to create calm, relaxing areas in school. What a brilliant team effort!





Terrific Transitions



**FRIDAY 26TH
JUNE**

STEP 02

Children are told their new classes and spend 10 minutes with their new classmates at the end of the day so they can see some friendly faces.

Parents/carers informed by letter of their child's new class and teacher.

**FRIDAY 26TH
JUNE**

STEP 03



**IMPORTANT
ANNOUNCEMENT**

Due to our early closure today, children will receive their new teacher letters on Monday. Thank you for your understanding.

Welcoming Wonderful New Teachers!



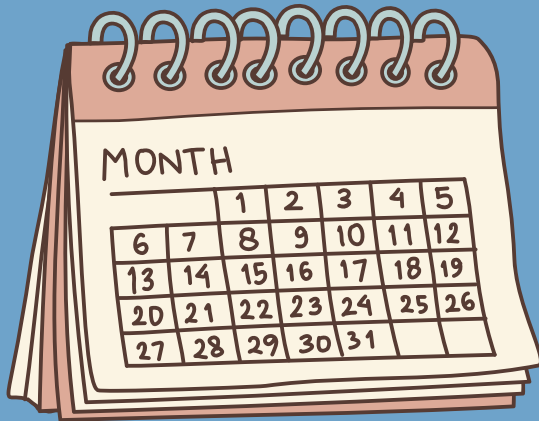
We are delighted to announce that we have two new teachers joining us in September – Miss Butters, who many of you already know from her work as a TA and is a qualified teacher, and Miss Husselbee, who is joining us from another school.

We are very excited to welcome them both and hope you will join us in making them feel part of our school community.



Dates for Your Diary

Term Dates 2025/2026



Monday 29th June	Year 1 & Year 6 Sports Day
Tuesday 7th July	Transition Morning
Tuesday 7th & Wednesday 8th July	Year 6 Transition
Monday 13th July	Reports sent home
Tuesday 14th July	Year 6 Leavers Performance
Wednesday 15th July	Year 6 Disco
Friday 17th July	Last day of term!

<p>Sep-25</p> <table border="1"> <tr><th>M</th><th>T</th><th>W</th><th>T</th><th>F</th><th>S</th><th>S</th></tr> <tr><td></td><td>2</td><td>3</td><td>4</td><td>5</td><td>6</td><td>7</td></tr> <tr><td>8</td><td>9</td><td>10</td><td>11</td><td>12</td><td>13</td><td>14</td></tr> <tr><td>15</td><td>16</td><td>17</td><td>18</td><td>19</td><td>20</td><td>21</td></tr> <tr><td>22</td><td>23</td><td>24</td><td>25</td><td>26</td><td>27</td><td>28</td></tr> <tr><td>29</td><td>30</td><td></td><td></td><td></td><td></td><td></td></tr> </table>	M	T	W	T	F	S	S		2	3	4	5	6	7	8	9	10	11	12	13	14	15	16	17	18	19	20	21	22	23	24	25	26	27	28	29	30						<p>Oct-25</p> <table border="1"> <tr><th>M</th><th>T</th><th>W</th><th>T</th><th>F</th><th>S</th><th>S</th></tr> <tr><td></td><td></td><td>1</td><td>2</td><td>3</td><td>4</td><td>5</td></tr> <tr><td>6</td><td>7</td><td>8</td><td>9</td><td>10</td><td>11</td><td>12</td></tr> <tr><td>13</td><td>14</td><td>15</td><td>16</td><td>17</td><td>18</td><td>19</td></tr> <tr><td>20</td><td>21</td><td>22</td><td>23</td><td>24</td><td>25</td><td>26</td></tr> <tr><td>27</td><td>28</td><td>29</td><td>30</td><td>31</td><td></td><td></td></tr> </table>	M	T	W	T	F	S	S			1	2	3	4	5	6	7	8	9	10	11	12	13	14	15	16	17	18	19	20	21	22	23	24	25	26	27	28	29	30	31			<p>Nov-25</p> <table border="1"> <tr><th>M</th><th>T</th><th>W</th><th>T</th><th>F</th><th>S</th><th>S</th></tr> <tr><td></td><td></td><td></td><td></td><td></td><td></td><td>1</td></tr> <tr><td>2</td><td>3</td><td>4</td><td>5</td><td>6</td><td>7</td><td>8</td></tr> <tr><td>9</td><td>10</td><td>11</td><td>12</td><td>13</td><td>14</td><td>15</td></tr> <tr><td>16</td><td>17</td><td>18</td><td>19</td><td>20</td><td>21</td><td>22</td></tr> <tr><td>23</td><td>24</td><td>25</td><td>26</td><td>27</td><td>28</td><td>29</td></tr> <tr><td>30</td><td></td><td></td><td></td><td></td><td></td><td></td></tr> </table>	M	T	W	T	F	S	S							1	2	3	4	5	6	7	8	9	10	11	12	13	14	15	16	17	18	19	20	21	22	23	24	25	26	27	28	29	30						
M	T	W	T	F	S	S																																																																																																																																	
	2	3	4	5	6	7																																																																																																																																	
8	9	10	11	12	13	14																																																																																																																																	
15	16	17	18	19	20	21																																																																																																																																	
22	23	24	25	26	27	28																																																																																																																																	
29	30																																																																																																																																						
M	T	W	T	F	S	S																																																																																																																																	
		1	2	3	4	5																																																																																																																																	
6	7	8	9	10	11	12																																																																																																																																	
13	14	15	16	17	18	19																																																																																																																																	
20	21	22	23	24	25	26																																																																																																																																	
27	28	29	30	31																																																																																																																																			
M	T	W	T	F	S	S																																																																																																																																	
						1																																																																																																																																	
2	3	4	5	6	7	8																																																																																																																																	
9	10	11	12	13	14	15																																																																																																																																	
16	17	18	19	20	21	22																																																																																																																																	
23	24	25	26	27	28	29																																																																																																																																	
30																																																																																																																																							
<p>Dec-25</p> <table border="1"> <tr><th>M</th><th>T</th><th>W</th><th>T</th><th>F</th><th>S</th><th>S</th></tr> <tr><td>1</td><td>2</td><td>3</td><td>4</td><td>5</td><td>6</td><td>7</td></tr> <tr><td>8</td><td>9</td><td>10</td><td>11</td><td>12</td><td>13</td><td>14</td></tr> <tr><td>15</td><td>16</td><td>17</td><td>18</td><td>19</td><td>20</td><td>21</td></tr> <tr><td>22</td><td>23</td><td>24</td><td>25</td><td>26</td><td>27</td><td>28</td></tr> <tr><td>29</td><td>30</td><td>31</td><td></td><td></td><td></td><td></td></tr> </table>	M	T	W	T	F	S	S	1	2	3	4	5	6	7	8	9	10	11	12	13	14	15	16	17	18	19	20	21	22	23	24	25	26	27	28	29	30	31					<p>Jan-26</p> <table border="1"> <tr><th>M</th><th>T</th><th>W</th><th>T</th><th>F</th><th>S</th><th>S</th></tr> <tr><td></td><td></td><td></td><td></td><td>1</td><td>2</td><td>3</td></tr> <tr><td>4</td><td>5</td><td>6</td><td>7</td><td>8</td><td>9</td><td>10</td></tr> <tr><td>11</td><td>12</td><td>13</td><td>14</td><td>15</td><td>16</td><td>17</td></tr> <tr><td>18</td><td>19</td><td>20</td><td>21</td><td>22</td><td>23</td><td>24</td></tr> <tr><td>25</td><td>26</td><td>27</td><td>28</td><td>29</td><td>30</td><td>31</td></tr> </table>	M	T	W	T	F	S	S					1	2	3	4	5	6	7	8	9	10	11	12	13	14	15	16	17	18	19	20	21	22	23	24	25	26	27	28	29	30	31	<p>Feb-26</p> <table border="1"> <tr><th>M</th><th>T</th><th>W</th><th>T</th><th>F</th><th>S</th><th>S</th></tr> <tr><td></td><td></td><td></td><td></td><td></td><td></td><td>1</td></tr> <tr><td>2</td><td>3</td><td>4</td><td>5</td><td>6</td><td>7</td><td>8</td></tr> <tr><td>9</td><td>10</td><td>11</td><td>12</td><td>13</td><td>14</td><td>15</td></tr> <tr><td>16</td><td>17</td><td>18</td><td>19</td><td>20</td><td>21</td><td>22</td></tr> <tr><td>23</td><td>24</td><td>25</td><td>26</td><td>27</td><td>28</td><td>29</td></tr> <tr><td>30</td><td></td><td></td><td></td><td></td><td></td><td></td></tr> </table>	M	T	W	T	F	S	S							1	2	3	4	5	6	7	8	9	10	11	12	13	14	15	16	17	18	19	20	21	22	23	24	25	26	27	28	29	30						
M	T	W	T	F	S	S																																																																																																																																	
1	2	3	4	5	6	7																																																																																																																																	
8	9	10	11	12	13	14																																																																																																																																	
15	16	17	18	19	20	21																																																																																																																																	
22	23	24	25	26	27	28																																																																																																																																	
29	30	31																																																																																																																																					
M	T	W	T	F	S	S																																																																																																																																	
				1	2	3																																																																																																																																	
4	5	6	7	8	9	10																																																																																																																																	
11	12	13	14	15	16	17																																																																																																																																	
18	19	20	21	22	23	24																																																																																																																																	
25	26	27	28	29	30	31																																																																																																																																	
M	T	W	T	F	S	S																																																																																																																																	
						1																																																																																																																																	
2	3	4	5	6	7	8																																																																																																																																	
9	10	11	12	13	14	15																																																																																																																																	
16	17	18	19	20	21	22																																																																																																																																	
23	24	25	26	27	28	29																																																																																																																																	
30																																																																																																																																							
<p>Mar-26</p> <table border="1"> <tr><th>M</th><th>T</th><th>W</th><th>T</th><th>F</th><th>S</th><th>S</th></tr> <tr><td>1</td><td>2</td><td>3</td><td>4</td><td>5</td><td>6</td><td>7</td></tr> <tr><td>8</td><td>9</td><td>10</td><td>11</td><td>12</td><td>13</td><td>14</td></tr> <tr><td>15</td><td>16</td><td>17</td><td>18</td><td>19</td><td>20</td><td>21</td></tr> <tr><td>22</td><td>23</td><td>24</td><td>25</td><td>26</td><td>27</td><td>28</td></tr> <tr><td>29</td><td>30</td><td>31</td><td></td><td></td><td></td><td></td></tr> </table>	M	T	W	T	F	S	S	1	2	3	4	5	6	7	8	9	10	11	12	13	14	15	16	17	18	19	20	21	22	23	24	25	26	27	28	29	30	31					<p>Apr-26</p> <table border="1"> <tr><th>M</th><th>T</th><th>W</th><th>T</th><th>F</th><th>S</th><th>S</th></tr> <tr><td></td><td></td><td></td><td>1</td><td>2</td><td>3</td><td>4</td></tr> <tr><td>5</td><td>6</td><td>7</td><td>8</td><td>9</td><td>10</td><td>11</td></tr> <tr><td>12</td><td>13</td><td>14</td><td>15</td><td>16</td><td>17</td><td>18</td></tr> <tr><td>19</td><td>20</td><td>21</td><td>22</td><td>23</td><td>24</td><td>25</td></tr> <tr><td>26</td><td>27</td><td>28</td><td>29</td><td>30</td><td></td><td></td></tr> </table>	M	T	W	T	F	S	S				1	2	3	4	5	6	7	8	9	10	11	12	13	14	15	16	17	18	19	20	21	22	23	24	25	26	27	28	29	30			<p>May-26</p> <table border="1"> <tr><th>M</th><th>T</th><th>W</th><th>T</th><th>F</th><th>S</th><th>S</th></tr> <tr><td></td><td></td><td></td><td></td><td></td><td></td><td>1</td></tr> <tr><td>2</td><td>3</td><td>4</td><td>5</td><td>6</td><td>7</td><td>8</td></tr> <tr><td>9</td><td>10</td><td>11</td><td>12</td><td>13</td><td>14</td><td>15</td></tr> <tr><td>16</td><td>17</td><td>18</td><td>19</td><td>20</td><td>21</td><td>22</td></tr> <tr><td>23</td><td>24</td><td>25</td><td>26</td><td>27</td><td>28</td><td>29</td></tr> <tr><td>30</td><td>31</td><td></td><td></td><td></td><td></td><td></td></tr> </table>	M	T	W	T	F	S	S							1	2	3	4	5	6	7	8	9	10	11	12	13	14	15	16	17	18	19	20	21	22	23	24	25	26	27	28	29	30	31					
M	T	W	T	F	S	S																																																																																																																																	
1	2	3	4	5	6	7																																																																																																																																	
8	9	10	11	12	13	14																																																																																																																																	
15	16	17	18	19	20	21																																																																																																																																	
22	23	24	25	26	27	28																																																																																																																																	
29	30	31																																																																																																																																					
M	T	W	T	F	S	S																																																																																																																																	
			1	2	3	4																																																																																																																																	
5	6	7	8	9	10	11																																																																																																																																	
12	13	14	15	16	17	18																																																																																																																																	
19	20	21	22	23	24	25																																																																																																																																	
26	27	28	29	30																																																																																																																																			
M	T	W	T	F	S	S																																																																																																																																	
						1																																																																																																																																	
2	3	4	5	6	7	8																																																																																																																																	
9	10	11	12	13	14	15																																																																																																																																	
16	17	18	19	20	21	22																																																																																																																																	
23	24	25	26	27	28	29																																																																																																																																	
30	31																																																																																																																																						
<p>Jun-26</p> <table border="1"> <tr><th>M</th><th>T</th><th>W</th><th>T</th><th>F</th><th>S</th><th>S</th></tr> <tr><td>1</td><td>2</td><td>3</td><td>4</td><td>5</td><td>6</td><td>7</td></tr> <tr><td>8</td><td>9</td><td>10</td><td>11</td><td>12</td><td>13</td><td>14</td></tr> <tr><td>15</td><td>16</td><td>17</td><td>18</td><td>19</td><td>20</td><td>21</td></tr> <tr><td>22</td><td>23</td><td>24</td><td>25</td><td>26</td><td>27</td><td>28</td></tr> <tr><td>29</td><td>30</td><td></td><td></td><td></td><td></td><td></td></tr> </table>	M	T	W	T	F	S	S	1	2	3	4	5	6	7	8	9	10	11	12	13	14	15	16	17	18	19	20	21	22	23	24	25	26	27	28	29	30						<p>Jul-26</p> <table border="1"> <tr><th>M</th><th>T</th><th>W</th><th>T</th><th>F</th><th>S</th><th>S</th></tr> <tr><td></td><td></td><td></td><td>1</td><td>2</td><td>3</td><td>4</td></tr> <tr><td>5</td><td>6</td><td>7</td><td>8</td><td>9</td><td>10</td><td>11</td></tr> <tr><td>12</td><td>13</td><td>14</td><td>15</td><td>16</td><td>17</td><td>18</td></tr> <tr><td>19</td><td>20</td><td>21</td><td>22</td><td>23</td><td>24</td><td>25</td></tr> <tr><td>26</td><td>27</td><td>28</td><td>29</td><td>30</td><td>31</td><td></td></tr> </table>	M	T	W	T	F	S	S				1	2	3	4	5	6	7	8	9	10	11	12	13	14	15	16	17	18	19	20	21	22	23	24	25	26	27	28	29	30	31		<p>Key</p> <ul style="list-style-type: none"> ■ PD Day ■ School Holiday ■ Weekend ■ Public Holiday 																																																	
M	T	W	T	F	S	S																																																																																																																																	
1	2	3	4	5	6	7																																																																																																																																	
8	9	10	11	12	13	14																																																																																																																																	
15	16	17	18	19	20	21																																																																																																																																	
22	23	24	25	26	27	28																																																																																																																																	
29	30																																																																																																																																						
M	T	W	T	F	S	S																																																																																																																																	
			1	2	3	4																																																																																																																																	
5	6	7	8	9	10	11																																																																																																																																	
12	13	14	15	16	17	18																																																																																																																																	
19	20	21	22	23	24	25																																																																																																																																	
26	27	28	29	30	31																																																																																																																																		



DRESS DOWN FOR A POUND
HELP FUND OUR SUMMER FUN
DAY!

FRIDAY
10TH JULY

We are excited to announce a non-uniform day on Friday 10th July. Children are invited to come to school in their own clothes for the day.

To take part, we kindly ask for a £1 donation, which will go towards funding our special Summer Festival treat for the children at the end of term.

Thank you for your continued support—we look forward to a fun day while raising funds for a memorable celebration!



Helping Everyone Feel Their Best



We kindly ask you to check your child's hair regularly for head lice.

Head lice are very common in primary school children and nothing to worry about. If you do find any, simple treatment from a pharmacy can help clear them quickly.

If you need any support or guidance, please don't hesitate to reach out—we're here to help.

Thank you for working with us to keep all our children happy and comfortable.



Attendance Matters
Every day counts!

Miss school...
MISS OUT

A thick, blue, hand-drawn style brushstroke that underlines the text 'MISS OUT'.



**WILLIAM REYNOLDS
PRIMARY SCHOOL & NURSERY**

Ofsted
Outstanding
Provider

NURSERY ADMISSIONS

Do you have a child due to start
Nursery?
Our Early Years offers:

- ✓ Fun & Engaging Learning
- ✓ Safe & Nurturing Environment
- ✓ Experienced & Caring Teachers
- ✓ Focused teaching sessions
- ✓ Purposeful play and exploration

We have spaces available for
September 2026.

15 hours and 30 hours



01952 388280



A2158@telford.gov.uk



BEGINNING THE JOURNEY 'TO BE THE BEST WE CAN BE'.

Playing Together



Telford & Wrekin
Co-operative Council

Protect, care and invest
to create a better borough



Telford and Wrekin
FAMILY HUBS

Playing Together

Come and join us and have fun
playing with your 0-5 year olds!

A **FREE** session for you and your child to enjoy
games, physical play and creative activities.

www.telfordfamilyhubs.co.uk

Monday	Damson Family Hub, Donnington Community Hub, St Matthews Rd – TF2 7PR	9:30-11am
Tuesday	Neighbourhood Centre, Hollinswood	10am – 11.30am
Tuesday	Silver Birch Family Hub, Sutton Hill	1pm – 2:30pm
Friday	Park Lane Centre, Woodside	1pm – 2.30pm
	All groups are run term time only	



Safeguarding and Wellbeing

Are you concerned about a child?

Please share your concerns with:



Mrs Angeloff
Acting Headteacher



Miss Shankland
Assistant Headteacher
SENDCO



Mrs Jones
Assistant Headteacher



Miss O'vens
Attendance Officer



Miss Bowen
Class Teacher



Miss Groucott
Family Inclusion and
Safeguarding
Manager



Mrs Sands
Pastoral Team Leader

If you feel that you are
unable to talk to anyone
above. please ring...

Family Connect
01952 385385

Out of hours
01952 676500

NSPCC
0808 8005000

Thank you for helping us to keep children. safe

Strengthening Our Support Even Further!



You may have noticed that Mrs Jones has been out of school for a few days—she's been busy completing her Designated Safeguarding Lead training.

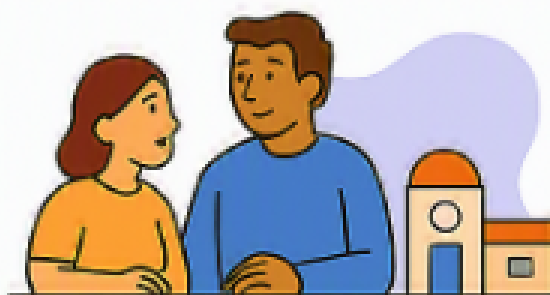
This means she's bringing back even more knowledge and expertise to further strengthen the excellent care and support we already provide for our children and families.

Keeping Children Safe & Supported



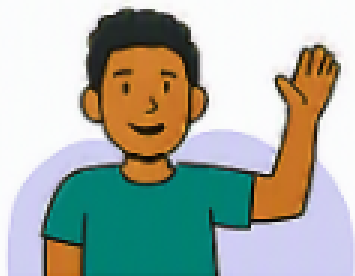
We Listen

We support children with any worries or concerns



We Work Together

We work with families to offer help and guidance



We Are Here for You

- No concern is too small
- Please speak to us or contact the school office

We Keep Children Safe

We help make school a safe, happy place every day

✦ *Together, we keep our school safe, caring and supportive for every child.*

DSL (Designated Safeguarding Lead)

DDSL (Deputy Designated Safeguarding Lead)

GOOD SLEEP. STRONG KIDS. GREAT MEMORIES.

World Cup moments last a lifetime—
let's start with healthy routines.



**MATCHES
ARE LATE
THIS YEAR!**

Let's plan ahead
to keep kids
happy, healthy
and ready
to learn.

WHY SLEEP MATTERS

Good sleep helps children:



Learn and
concentrate
better



Stay healthy
and fight
illness



Regulate
moods and
behaviour



Have energy
for play,
sport and fun



Feel calm,
safe and
connected

Well-rested kids
do better in school,
handle emotions
better and enjoy
life more.

ROUTINES ARE THE SECRET WEAPON

Predictable routines help children feel secure—especially when bedtimes are later.

1 KEEP A CONSISTENT BEDTIME



Aim for the same
bedtime most nights,
even on match days.
Their bodies thrive
on rhythm.

2 CREATE A CALM WIND-DOWN ROUTINE



Dim the lights,
unplug from screens,
read, talk or listen to
music. This helps
their brain switch
off and sleep well.

3 PLAN AHEAD FOR LATE MATCHES



Agree as a family which
key matches you'll
watch together and
how you'll adjust
bedtime afterward.

4 PROTECT SCHOOL DAYS



On school days,
prioritise sleep.
They need rest to
focus, learn and feel
their best.

5 LET THEM BE PART OF THE PLAN



Involve your child in
decisions. When they
know the plan, they're
more likely to
stick with it.

BALANCE IS KEY



- It's okay to stay up for the big moments—the cheers, the goals, the memories together.

Occasional late nights are part of childhood.

What matters most is getting back to good sleep and routines afterwards.



WATCH THE HIGHLIGHTS!

When possible, watch the highlights rather than the whole game.

- ✓ You still catch the goals and key moments
- ✓ It saves bedtime
- ✓ Kids wake up rested and ready for the day
- ✓ Everyone feels better!



REMEMBER

Behind every great player is rest and recovery.

Behind every thriving child is good sleep, loving routines and your support.

You're their biggest fan.

LET'S ENJOY THE WORLD CUP TOGETHER



Happy kids. Healthy habits. Unforgettable moments.



Age Restrictions for Social Media Platforms

13

is the minimum age for account holders on these social media sites and apps.



X (formerly Twitter)



Facebook



Instagram



Pinterest



Messenger



TikTok



Discord



Snapchat



Twitch



Yubo



Reddit



YouTube



BeReal



WhatsApp



Help When You Need It



Mental Health Support

Mind

<https://www.mind.org.uk>

Provides information and support for anyone experiencing mental health difficulties, including advice, helplines and local services.

The Samaritans

<https://www.samaritans.org>

24/7 confidential emotional support for anyone feeling distressed, overwhelmed or in need of someone to talk to.

NHS – Every Mind Matters

<https://www.nhs.uk/every-mind-matters>

NHS-approved advice and tools to support mental wellbeing, including stress, anxiety, sleep and mood.

Citizens advice

<https://citizensadvice.telfordandthewrekin.org.uk>

Financial Wellbeing Support

MoneySavingExpert

<https://www.moneysavingexpert.com>

Independent, practical advice on saving money, budgeting, benefits, bills and everyday finances.

National Debtline

<https://www.nationaldebtline.org>

Free, confidential advice to help people deal with debt, including factsheets, tools and phone support.

StepChange Debt Charity

<https://www.stepchange.org>

Expert, free debt advice and practical solutions to help people regain control of their finances.



Bereavement

Telford Bereavement Group / Shropshire Bereavement Group 07932513880

Winston's wish Childhood Bereavement support / winstonswish.org

Cruse Bereavement support / www.cruse.org.uk

Mind Bereavement support
www.mind.org.uk

Sandy Bear charity supporting children through Bereavement
[/www.sandybear.co.uk](http://www.sandybear.co.uk)



Message from Mrs Angeloff

“At our school, we care about everyone’s mental health. It’s important to talk and listen to each other, and to know it’s okay to ask for help. Together, we can make our school a safe and kind place for all children.”



Support for young people

Helplines & textlines

If you feel overwhelmed, or like you want to hurt yourself, you can:

Text **SHOUT** to **85258** to contact the [Shout textline](#).

Call [HOPELINE247](#) on **0800 068 4141** or the **NHS** on **111** and select option 2.

Contact [Childline](#) by using [1-2-1 chat](#) or calling **0800 1111**.

Call [Samaritans](#) on **116 123** for 24/7 support.

Online

[Mind's information pages](#) for young people shares more about mental health, where to get support and tips for coping.

[YoungMinds](#) also offer mental health support for young people, parents and carers.

[Read our full list of useful contacts for young people.](#)

Support for adults

Mind's helplines

Support line: 0300 102 1234
Monday to Friday, 9am-6pm

Infoline: 0300 123 3393
Email: info@mind.org.uk
Monday to Friday, 9am-6pm

Welfare benefits line: 0300 222 5782
Monday to Friday, 9am-5pm

Legal line: 0300 466 6463
Email: legal@mind.org.uk
Monday to Friday, 9am-6pm

Local Minds

Local Minds offer face-to-face services across England and Wales. These services include talking therapies, peer support and advocacy.

Side by Side

Side by Side is our supportive online community for anyone experiencing a mental health problem. The Side by Side community is available 24/7.
sidebyside.mind.org.uk

Samaritans

Call 116 123
Email jo@samaritans.org.uk
24/7 support

CALM

Call 0800 58 58 58
Helpline open 5pm-midnight, 365 days a year. Webchat available on website

SHOUT

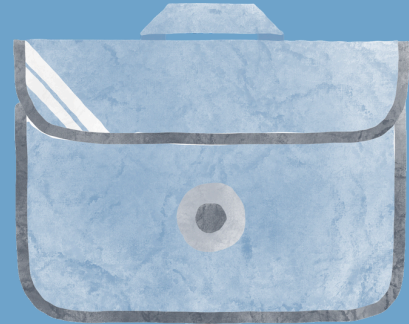
Text SHOUT to 85258
24/7 confidential text support

HOW U?
ARE U?

School Bags and Water Bottles

Please can we remind families to ensure that children bring their school bags and a water bottle to school every day. These are important for carrying books and letters between home and school, and for helping children stay hydrated throughout the day.

Thank you for your continued support.



Thank You for Switching Off

Helping Us Keep Our School Entrance Fresh and Friendly

To help create a healthier start and end to the school day for our children, we kindly encourage drivers to switch off their engines when parked near the school gates.

Now that the weather is getting nicer, walking to and from school can also be a healthy and enjoyable option for families who are able to do so. We know this isn't possible for everyone.

Every little bit helps, and we're very grateful to our families for working together to make arrival and pick-up times a pleasant and welcoming experience for everyone.



Keeping Our School Gates Safe and Friendly

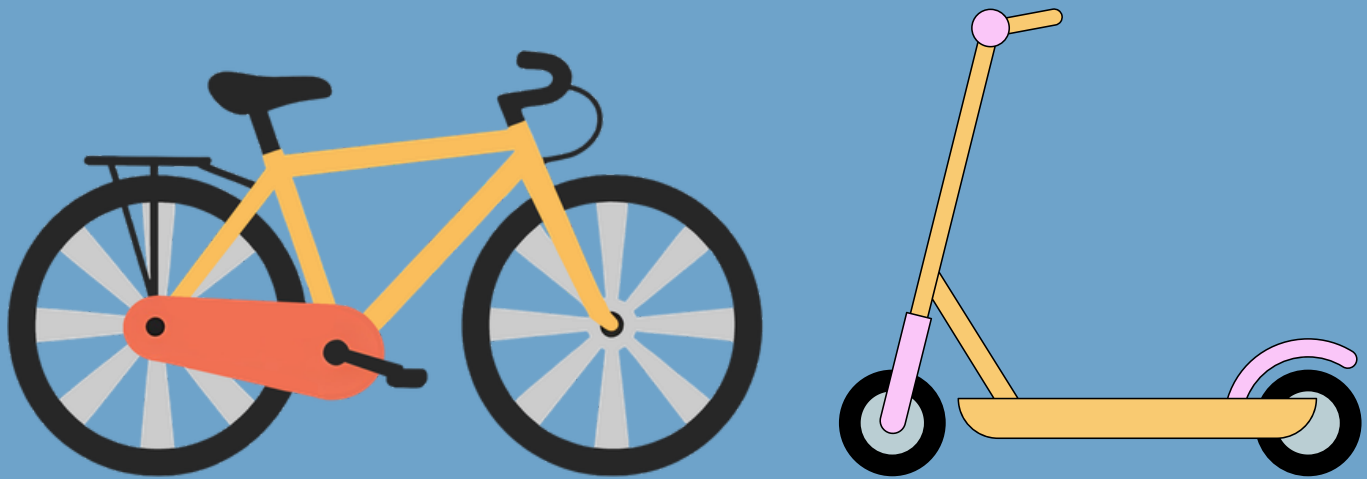
Please help us keep our school gates a safe and welcoming place for all our children.

We kindly ask that adults avoid smoking and use kind, respectful language near the school, especially at the start and end of the day.

Thank you for your support.

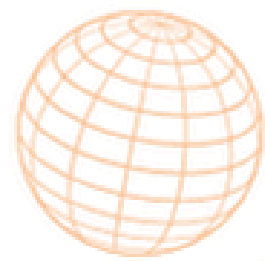


Safety First: Walk Those Wheels!



A quick reminder to all children to help keep everyone safe on the playground. Please make sure that bikes and scooters are pushed, not ridden, while on school grounds.

Thank you for helping us to look after one another and keep our playground a safe and happy place for everyone.



July - Sept

What's On?!

2026

JULY
WEDNESDAY
1
5:00pm-
6:30pm

Elevate Youth 14-24 Year Olds

We're excited to have Lewis joining us to help create a promotional video for Elevate Youth. This is a great opportunity for the group to showcase all the fantastic work you've been involved in and help us reach more young people who may benefit from joining Elevate.

Suite 12&15 Hazledine House, Central Square, Telford Centre, TF3 4JL

JULY
THURSDAY
2
5pm-
6:30pm

Dugout Youth Group 11-18 Years Old

Come and join us at Dugout Youth Group. Whether you want to kick a ball around, play pool, table tennis, table football, board games or UNO, try different creative activities each month, or simply chill in a welcoming space, there is something for everyone. There is no pressure to socialise or join in, and you are welcome to attend at your own pace. Young people are welcome to come along for a taster session with no pressure to stay. Parents/carers stay onsite, siblings are welcome, and free refreshments are provided.

Family Zone, Hazledine House, Central Square, Town Centre, TF3 4JL

JULY
WEDNESDAY
8
4:15pm-6pm

Chess

Join us at the Telford All Age Autism Hub for a special group designed for our young people and adults registered with us. Whether you're new to the game or consider yourself a Pro we'd love to see you there!

 4:15 PM – 5:00 PM

This hour is exclusively for children and young people.

 5:00 PM – 6:00 PM

Open to all ages – children, young people, and adults welcome!

Sunflower - Brookside Community Café, Brookside Community Centre, Brookside, TF3 1LP

JULY
TUESDAY
14
2:00pm-
6:00pm

CAMHs Neurodiverse Appointment

Drop-in regarding a child who is currently on the neurodevelopmental waiting list. The purpose is for information sharing (e.g. where the child is on the waiting list, answering questions about the process, families giving updates on how they are doing at school and at home), psychoeducation, and signposting to our partners and other relevant resources.

20 minute appointments available between 2:00pm and 6:00pm.
Booking required

Suite 12 & 15 Hazledine House, Central Square, Telford Centre, TF3 4JL

JULY
TUESDAY
14
5:00pm-
6:30pm

Elevate Youth 14-24 Year Olds

This Elevate Youth Group session will focus on exploring the CYP Zone on the website and reviewing recent updates to the Elevate Youth information. Young people will have the opportunity to share feedback, learn about new resources, and help shape how information is presented online.

Suite 12&15 Hazledine House, Central Square, Telford Centre, TF3 4JL

TO BOOK ONTO ANY OF OUR ACTIVITIES PLEASE EMAIL OR CALL:
CHILDRENSAUTISM@TANDWCVS.ORG.UK/01952 626062



Woodside Youth Club

For school years 1-6

FRIDAYS

TERM-TIME ONLY

3.30-5PM

PARK
LANE
CENTRE



In partnership with

**Love.
Play.
Active.**
MULTISPORTS

Scan the QR code to
register your child

For more information email
charlotte@madeleytowncouncil.gov.uk or call 01952 567280