



# School Newsletter September 2023

School Contact Number: 01952 388280

School Email: A2158@telford.gov.uk

School Website: <https://williamreynoldsprimary.org/>

**"To be the best  
we can be"**

Head Teacher:  
Miss Julie Marriott

Chair of Governors:  
Mrs Jane Tranter

Dear Parents, Carers and Governors,



Welcome back to our new school year!

We have had a busy start to the Autumn term and the children, as always, have been fabulous and quickly settled back in their new classes. They continue to make us all proud every day.

## School Start Time Reminder

Our gates are open at 8:30am and the classroom doors open at 8:35am.

Morning Nursery sessions start at 8:30am.



All lessons from Reception - Year 6 start at 08:45am. Please support your child by ensuring they arrive at school on time for school to ensure they are not missing important learning.

Our school gates are locked at 08:45am. Any arrivals after 08:45am will be classed as late and monitored through our attendance procedures by school and the Education Welfare Officer

## Our School Values

<b>Challenge</b>  Make every experience exceptional	<b>Honesty</b>  Always do the right thing	<b>Ownership</b>  Take accountability for your actions	<b>Courage</b>  Be determined to deliver greatness	<b>Collaboration</b>  Work together to succeed
---	---	--	--	--

# Parent Consultations

Date	Year Group	Event
Monday 16th October	Y4	Parent Consultations
Wednesday 18th October	Y2	Parent Consultations
Thursday 19th October	Y5	Parent Consultations
Friday 20th October	Y6	Parent Consultations
Monday 23rd October	Y1	Parent Consultations
Tuesday 24th October	Reception	Parent Consultations
Thursday 26th October	Y3	Parent Consultations
Monday 20th November	Nursery	Parent Consultations

## Is your child due to start Reception in September 2024?

The online application form for children starting school in September 2024 is now available via the website [www.telford.gov.uk/admissions](http://www.telford.gov.uk/admissions).

The online form will need to be used to apply for a place.

There is an information booklet available online at: [School Admissions Information Booklets - 2024 / 2025 - Telford & Wrekin Council](#)

## Year 7 Applications for September 2024

If your child is currently in Year 6, you will need to go online to apply for their Year 7 school place.

It is vital that this application is made by 31st October - failure to do so is likely to result in your child being allocated a school that you do not want them to attend, meaning that they may also have to travel some distance to attend school.

You can apply online at :

[https://www.telford.gov.uk/info/20026/school\\_admissions/3247/](https://www.telford.gov.uk/info/20026/school_admissions/3247/)



Telford & Wrekin  
Cooperative Council

Protect, care and invest  
to create a better borough

**Apply online  
NOW**

## Starting school?

Closing date for applications:

**15 January 2024**

If your child has an Education, Health & Care Plan (EHCP) the closing date is **31 October 2023**.

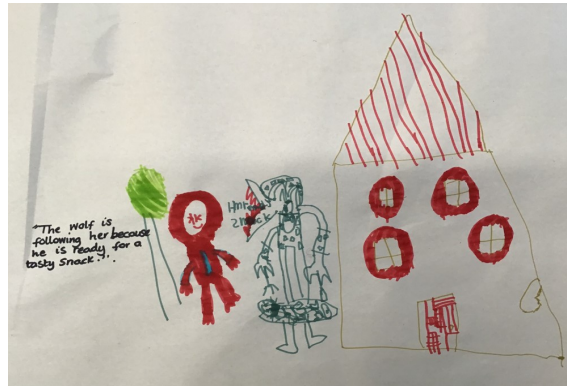
[www.telford.gov.uk/admissions](http://www.telford.gov.uk/admissions)

- You **must** apply if your child was born between 1 September 2019 – 31 August 2020.
- You **must** apply even if your child is attending a nursery or pre-school on a school site or you have a child already attending the school.
- Attending a nursery does **not** guarantee a school place.
- School places are allocated in line with oversubscription criteria.
- See website for more information [www.telford.gov.uk/admissions](http://www.telford.gov.uk/admissions) or contact School Admissions at [admissions@telford.gov.uk](mailto:admissions@telford.gov.uk)



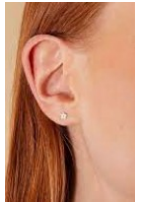
## A big welcome to our new Reception classes...

The children have settled brilliantly into our Reception classes. They are beginning to understand the routines and expectations of school life and are building relationships with both adults and children alike. It has been lovely to see them engaged and excited when participating in their learning.



## Jewellery

It is our policy that pupils do not wear jewellery to school. We have assessed the risk of injury to pupils and in order to reduce the risk we have agreed a policy whereby pupils may only wear small stud earrings (no hoops), if their ears are pierced, and a watch (smart watches are not permitted).



Jewellery needs to be removed for PE lessons.

### TELFORD DEVELOPMENT CENTRE

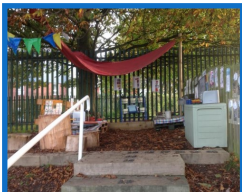
WOLVES FOOTBALL DEVELOPMENT

<b>Monday evenings:</b> Outfield & Goalkeeper sessions	<b>Wednesday evenings:</b> Outfield only sessions
<b>Where:</b> Holy Trinity Academy, Teece Drive, Priorslee, TF2 9SQ	<b>Where:</b> Telford College, Haybridge Road, Telford, TF1 2NP
<b>Who:</b> Mixed (boys & girls) Reception* to Year 7	<b>Who:</b> Mixed (boys & girls) Reception to Year 6
<b>Times:</b> 6.00-7.00pm (R-Y7) *GK from Y2-Y7	<b>Times:</b> 6.00-7.00pm (R-Y3) 7.00-8.00pm (Y4-Y6)

To book, visit [coachingwolves.co.uk](http://coachingwolves.co.uk) or email [footballdevelopment@wolves.co.uk](mailto:footballdevelopment@wolves.co.uk) for more information.

## Nursery Places

We have spaces available for Nursery. Children can start after their third birthday - please ring the School Office.



## Wraparound Care

We provide:

**Breakfast Club: 07:45am**

**Cost: £1:50 per session (£1 for a sibling attending the same session)**

**After School Provision: Until 5:30pm**



**Cost: £5 per session**

Please fill in a form at the office if you need a place for your child. Payment is made through ParentPay.



## Parking in Westbourne and Ferridays Fields

An issue which is a top priority for us is the safety of our children. That's why we are asking you all to think about where you park when doing the school run. Dangerous parking puts our children at risk and no one wants that.

We appreciate that pick up and drop off times are very busy and so we are encouraging you to consider walking or cycling to school instead. Both are cheaper alternatives, have health benefits and are better for the environment.



Our message is: please park safely, legally and considerately, thinking about our neighbours and setting a good example to our children. This will ensure our pupils have a happy and safe journey to and from school.

## School Uniform

Thank You to all the parents and Carers who are supporting our school by ensuring their child attends school in our school uniform.



The children look so smart in their uniform and black school shoes.



## School Menu

School meals cost £2.50 - this is payable through ParentPay as normal unless you are entitled to Free School Meals.



Reception, Year 1 and Year 2 children have universal free school meals.

You can view our current school menu by visiting our website:

[School Lunchtime Menu | - William Reynolds](https://www.williamreynoldsprimary.org)  
([williamreynoldsprimary.org](https://www.williamreynoldsprimary.org))



## Subject Spotlight: Physical Education

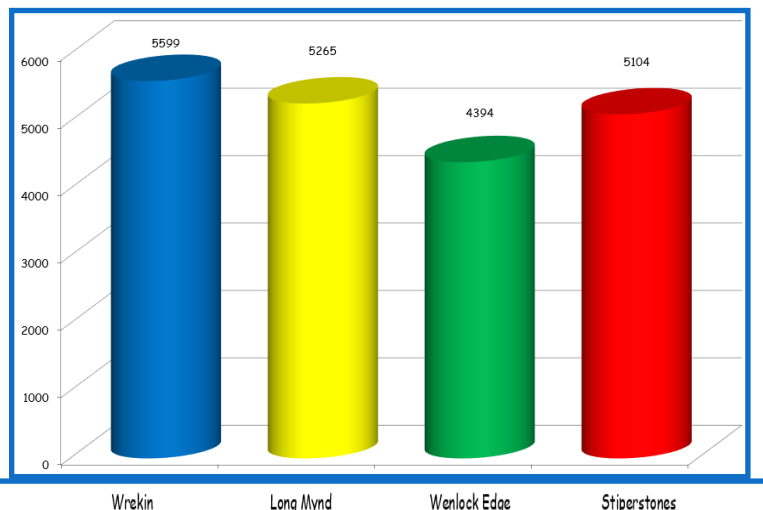
Physical Education at William Reynolds Primary School and Nursery

At William Reynolds Primary School, we firmly believe that Physical Education should be experienced in a safe, supportive and encouraging environment. This helps our pupils understand that to be successful, not just in sport but in all areas of learning and life, you must work hard, show resilience, have determination and be prepared to practise things time and time again in order to get better and improve - to be the best we can be!



Children earn House Points as they engage in competitive sports - these are calculated throughout the year.

Last Year, the trophy was won by Wrekin!



## House Captains

Congratulations to our new House Captains for 2023-2024. They are representatives for their respective School Houses (Long Mynd, Stiperstones, Wenlock Edge and Wrekin). They will be working with Mr Tagg throughout the year to look at how the children in school engage in healthy and active lifestyles.

Some of the things they will meet to look at this year are:

- The playtime offer - what resources and equipment are available on the playgrounds and how are they being used by children.
- Extra-curricular activities - what activities are offered, how popular are they, what other activities and clubs would children like to happen in school.
- They will also be making sure that each House competes as well as it can in the competitions that happen in PE lessons throughout the year, aiming to win the House Trophy at the end of the year.

### Long Mynd House Captains

Alexia Tivey and Caiden Flanagan



### Stiperstones House Captains

Ella Bromwell and Kieran Guvamatanga



### Wenlock Edge House Captains

Darcy Williams and Oscar Beard



### Wrekin House Captains

Trai Brown-McCatty and Kayla-Mae Hill





## Our School Rainbow Values

Our School Values are consistent across school and children are motivated to work towards these values every day in school. They are always proud when they receive recognition from their teachers for their achievements.

Challenge	Honesty	Ownership	Courage	Collaboration
				
<b>Push ourselves and have confidence</b>	<b>Always do the right thing</b>	<b>Take responsibility for your actions</b>	<b>Be determined to deliver greatness</b>	<b>Work together to succeed</b>
<ul style="list-style-type: none"> <li>• Work hard</li> <li>• Don't give up</li> <li>• Be a creative and independent thinker</li> </ul>	<ul style="list-style-type: none"> <li>• Act honestly</li> <li>• Do what is right over what is easy</li> <li>• Treat everyone with respect</li> <li>• Respect our differences</li> </ul>	<ul style="list-style-type: none"> <li>• Go the extra mile</li> <li>• Take responsibility in all areas of school</li> <li>• Care about the wellbeing of yourself and others</li> <li>• Be positive</li> </ul>	<ul style="list-style-type: none"> <li>• Be brave</li> <li>• Be determined</li> <li>• Try hard everyday</li> <li>• Have confidence</li> </ul>	<ul style="list-style-type: none"> <li>• Work together</li> <li>• Listen to others</li> <li>• Respect the opinions of others</li> <li>• Participate in all activities</li> <li>• Be proud of our diverse, British society.</li> </ul>

**William Reynolds Rainbow**  

Each week, children are awarded Values Certificates on a Friday. Teachers identify children who are showing the school values - they have to work hard to achieve these values in school so we are always really proud of them when they are awarded their certificates.



To achieve a 'Rainbow Values Badge' the children have to be awarded all five Values certificates within the school year they are in. There is a different Rainbow Badge to work towards in each year group.



## After School Clubs

Our after school clubs start on Monday 2nd October. Many children have signed up and will have lots of fun developing their skills over the Autumn Term.



### Monday

Dodgeball Years 3 and 4  
Young Voices Year 5 and 6



### Tuesday

Timetables Rockstar Club - Year 4  
Woodwork Years 5 and 6



### Wednesday

Fitness Fun - Years 2, 3 and 4  
Sewing/Crafts—Years 5 and 6



### Thursday

Board Games - Years 2, 3, 4, 5 and 6  
Sewing/Crafts - Years 3 and 4



### Friday

Dodgeball Years 5 and 6  
Woodwork Years 3 and 4





## Absence

Please call us by 9am, in the event of your child being too unwell to attend school.



**01952  
388280**

Thank you  
for your  
support.

Perfection ← 100%

Impressive ← 98%

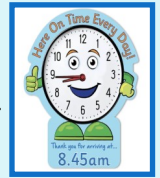
Good Effort ← 97%

Nearly There ← 95%

Needs to Improve ← 94%

Danger Zone ← 90%

## Punctuality



A polite reminder to our families that our school day starts at 8:45am.

If your child arrives after this time, their lessons will have already started, meaning that they are missing out on their learning which will have an impact on the progress they are able to make in school.

## Summer Term 2023 Attendance Party Winners



Well done to **Base 1** and **Base 8** who were rewarded with an attendance party in July 2023 for having the best attendance over the year.



The children were so excited to have won and had a fabulous time at their party, enjoying cakes, drinks and prizes, whilst having lots of fun.

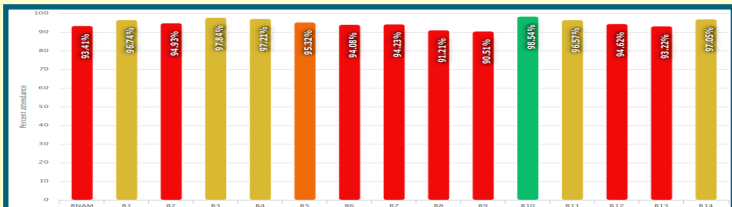
## Attendance

We are working really hard on our attendance and expect all children to attend every day unless they are extremely unwell. **Parents have a legal responsibility to ensure their child attends school regularly.**

If your child suffers from a recurrent illness that is having an impact on their attendance, we are able to provide you with a print out of their attendance so that you can share this with their doctor, who may be able to provide further medical advice.

## Best attendance this year so far...

**Base 10** have the best attendance in the school so far this year - well done Base 10!



## Medication



If your child has been prescribed medication, we are able to administer this in school so they are still able to attend school. Please visit the school office to fill in a form, if your child needs to take prescribed medication during the school day.

## Celebrating Attendance in School

### Attendance Awards:



- \* 100% Badges will be awarded at the end of the year to the children who have attended school every day.
- \* Attendance rewards to children who have not achieved 100% but have met our school attendance target of at least 96%.
- \* Weekly attendance rewards for classes on a Friday are announced in Celebration Assembly - KS1 (playpark) and KS2 (Outdoor Gym).
- \* Attendance awards in Early Years.
- \* Attendance Parties for the class with the best attendance across the year.

## 100% Attendance

Well done to the children who had 100% attendance at the end of the year - we are really proud of them all.



## School Attendance Target



Every school day counts and we are aiming for **at least 96%** overall attendance this year. We rely on each and every one of you to support us to reach our target. Every missed school day means that your child misses out on important learning and when attendance becomes a concern, it can impact upon the progress your child makes in school.



**10 life-enhancing activities for children to try by the age of 10.**  
Find local activities and offers at  
**10by10.telford.gov.uk**

10 by 10, is an initiative which aims to encourage children in Telford & Wrekin to take part in ten life-enhancing activities by the time they are ten.

The 10 activities are:



**Join in competitive team sports**



**Play an instrument**



**Learn to swim**



**Visit the seaside and the countryside**



**Take part in drama and performing arts**



**Experience museums, galleries and heritage sites**



**Use a library**



**Learn to ride a bike**



**Take part in debating**



**Take part in camping trips and overnight residentials**

You can create a 10 By 10 account for your child to enable you to track your child's achievements by visiting the website below. After registering, you will get regular updates, news and offers from the scheme.

<https://www.telford.gov.uk/10by10>



### Park Lane Community Library

Have you taken your child to the local library at Park Lane Centre?

The library started with our children wanting a local library and was supported by local councillors. It is a fabulous resource in the local area and well worth a visit.

**PARK LANE CENTRE COMMUNITY LIBRARY**  
**OFFICIAL OPENING ON FRIDAY 2ND DECEMBER AT 3PM!**

We will be officially opening our new community library at our Christmas Fayre. Come along to have a look at all the fantastic books we have ready to lend out!

If you would like to register, you will need ID with your address on.

**OPENING HOURS WILL THEN BE MON, TUES, WEDS AND FRI 9AM - 4PM**

Funded by: **Pride in our Community**

This Library was opened by the Pupils of **William Reynolds Primary School**

Whose ideas and enthusiasm inspired us to create **Woodside Community Library**

At Park Lane Centre  
Funded by The Councillor's Pride Fund  
Cllr Rae Evans & Cllr Kelly Middleton  
Friday 2nd December 2022

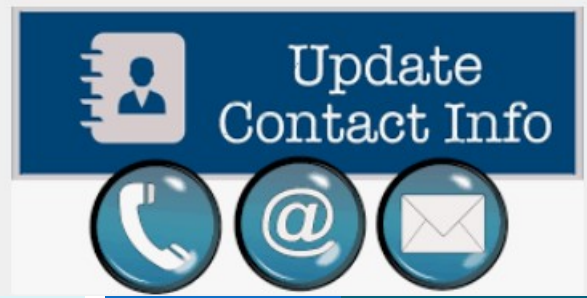


## Contact Information

Have you moved or changed your contact information?

If you have had a change of address, contact number or email address, it is really important for us to be informed of this.

Please go to the school office if you need to update any of your contact information. It is really important that there is an up to date contact number held at school so that we can contact you, if needed, during the school day.



## Staying Safe Online

There is a lot of information on our School Website for parents on online safety.

Online-Safety is all about being aware of the possible dangers and risks associated with using the Internet via a PC, laptop, mobile phone, iPad or game console. It also covers the use of electronic and online communication and wireless technology. It is vital, that children and adults, learn how to use the internet responsibly and make informed choices that will equip them now and in the future.

Click on the link below:

[Online Safety | - William Reynolds \(williamreynoldsprimary.org\)](http://www.williamreynoldsprimary.org)

If you are worried about your child's online behaviour and would like support from school, please speak to a Designated Safeguarding Lead (DSL).

Quick Age Limit Guide		
 WhatsApp 16	 TikTok 13	 facebook 13
 Instagram 13	 Snapchat 13	 13



- Our DSL's**
- Miss Julie Marriott
  - Mrs Joanne Shephard
  - Mrs Ruth Angeloff
  - Miss Emma Shankland
  - Mrs Wendy Bowen
  - Mrs Debra Groucott
  - Miss Lauren Dawkins

## Fire Alarm

We have recently had a Fire Drill, which involves the Fire Alarm sounding and all staff and children vacating the building and going to their designated point. It is important to practice, so that the children understand what to do in the event of a real fire.

Every person in the school was at their designated point in 2 minutes and 30 seconds. We were really proud of how sensibly the children vacated the building and lined up with their classes quietly so that teachers could retake the registers before returning to school to carry on with their lessons.





# What Parents & Carers Need to Know about WHATSAPP



WhatsApp is the world's most popular messaging service, with around two billion users exchanging texts, photos, videos and documents, as well as making voice and video calls. Its end-to-end encryption means messages can only be viewed by the sender and any recipients: not even WhatsApp can read them. Updates to its privacy policy in 2021 (involving sharing data with parent company Facebook) caused millions to leave the app, but the new policy was widely misinterpreted – it only related to WhatsApp's business features, not to personal messages.



## WHAT ARE THE RISKS?

### SCAMS

Fraudsters occasionally send WhatsApp messages pretending to offer prizes – encouraging the user to click on a link to win. Other common scams involve warning someone that their WhatsApp subscription has run out (aiming to dupe them into disclosing payment details) or impersonating a friend or relative and asking for money to be transferred to help with an emergency.

### DISAPPEARING MESSAGES

Users can set WhatsApp messages to disappear in 24 hours, 7 days or 90 days by default. Photos and videos can also be instructed to disappear after the recipient has viewed them. These files can't be saved or forwarded – so if your child was sent an inappropriate message, it would be difficult to prove any wrongdoing. However, the receiver can take a screenshot and save that as evidence.

### ENABLING FAKE NEWS

WhatsApp has unfortunately been linked to accelerating the spread of dangerous rumours. In India in 2018, some outbreaks of mob violence appear to have been sparked by false allegations being shared on the app. WhatsApp itself took steps to prevent its users circulating hazardous theories and speculation in the early weeks of the Covid-19 pandemic.

### POTENTIAL CYBERBULLYING

Group chat and video calls are great for connecting with multiple people in WhatsApp, but there is always the potential for someone's feelings to be hurt by an unkind comment or joke. The 'only admins' feature gives the admin(s) of a group control over who can send messages. They can, for example, block people from posting in a chat, which could make a child feel excluded and upset.

### CONTACT FROM STRANGERS

To start a WhatsApp chat, you only need the mobile number of the person you want to message (the other person also needs to have the app). WhatsApp can access the address book on someone's device and recognise which of their contacts also use the app. So if your child has ever given their phone number to someone they don't know, that person could use it to contact them via WhatsApp.

### LOCATION SHARING

The 'live location' feature lets users share their current whereabouts, allowing friends to see their movements. WhatsApp describes it as a "simple and secure way to let people know where you are." It is a useful method for a young person to let loved ones know they're safe – but if they used it in a chat with people they don't know, they would be exposing their location to them, too.

## Advice for Parents & Carers



### CREATE A SAFE PROFILE

Even though someone would need a child's phone number to add them as a contact, it's also worth altering a young person's profile settings to restrict who can see their photo and status. The options are 'everyone', 'my contacts' and 'nobody' – choosing one of the latter two ensures that your child's profile is better protected.



### EXPLAIN ABOUT BLOCKING

If your child receives spam or offensive messages, calls or files from a contact, they should block them using 'settings' in the chat. Communication from a blocked contact won't show up on their device and stays undelivered. Blocking someone does not remove them from your child's contact list – so they also need to be deleted from the address book.



### REPORT POTENTIAL SCAMS

Young people shouldn't engage with any message that looks suspicious or too good to be true. When your child receives a message from an unknown number for the first time, they'll be given the option to report it as spam. If the sender claims to be a friend or relative, call that person on their usual number to verify it really is them, or if it's someone trying to trick your child.



### LEAVE A GROUP

If your child is in a group chat that is making them feel uncomfortable, or has been added to a group that they don't want to be part of, they can use WhatsApp's group settings to leave. If someone exits a group, the admin can add them back in once; if they leave a second time, it is permanent.



### THINK ABOUT LOCATION

If your child needs to use the 'live location' function to show you or one of their friends where they are, advise them to share their location only for as long as they need to. WhatsApp gives a range of 'live location' options, and your child should manually stop sharing their position as soon as it is no longer needed.



### DELETE ACCIDENTAL MESSAGES

If your child posts a message they want to delete, WhatsApp allows the user seven minutes to erase a message. Tap and hold on the message, choose 'delete' and then 'delete for everyone.' However, it's important to remember that recipients may have seen (and taken a screenshot of) a message before it was deleted.



### CHECK THE FACTS

You can now fact-check WhatsApp messages that have been forwarded at least five times, by double-tapping the magnifying glass icon to the right of the message. From there, your child can launch a Google search and decide for themselves whether the message was true or not.



## Meet Our Expert

Parven Kaur is a social media expert and digital media consultant who is passionate about improving digital literacy for parents and children. She has extensive experience in the social media arena and is the founder of Kids N Clicks: a web resource that helps parents and children thrive in a digital world.







**Who is this service for?**

Our service is available to children and young people 0-18 years who have a diagnosis of Autism. Our website is available for everyone and offers a wide range of information and resources.

To access our Children's Autism Hub you need to be a resident of Telford and Wrekin.

**Telford Children's Autism Hub**

**HOW TO FIND US**

We are based at Telford Centre, so it's easy to get to us by car, bus or train!

Plus, there's plenty of parking too!

**GET IN TOUCH**

Telford & Wrekin CVS  
 Suite 12 and 15  
 Second Floor  
 Hubside House  
 Central Square  
 Telford  
 TF3 4L

Phone: 01952 262062 (24-hour answerphone)  
 E-mail: [childrensanisim@standwvcs.org.uk](mailto:childrensanisim@standwvcs.org.uk)  
 Website: <https://www.telfordautismhub.org.uk/>

Children & Young People 0-18

**PODS HELPLINE**  
 (Supporting families with disabled/Additional need children aged 0-25 years)

Are you in need of some guidance or information? Would you like to access our Befriending service or maybe receive a call from one of our staff?

Then please give us a call or email us!

Hello it's PODS, how can we help?

**01952 458047**  
[info@podstelford.org](mailto:info@podstelford.org)

Calls will be answered between 10am-4pm Monday-Friday, outside these hours please leave a message.

**SEND**  
 Telford & Wrekin Local Offer

Search this site [Search]

Links Newsletters FAQs Contact

SEND News Events feed

Welcome to Telford & Wrekin's Local Offer

The Local Offer aims to bring together useful information across education, health and social care within one website. You can find information, advice and guidance and a range of local service providers who support children and young people with Special Educational Needs and Disabilities (SEND).

Simply click on the age range that applies to you, or your child if you are a parent or carer.

- SEND Local Offer for 0-5 years old
- SEND Local Offer for 6-10 years old
- SEND Local Offer for 11-15 years old
- SEND Local Offer for 16-25 years old
- SEND Local Offer for All ages
- Find a school

Choose an option [GO]

- Homepage
- SEN Support
- Inclusive School Forum
- SEND Strategy
- What is an Education, Health and Care (EHC) Plan?
- EHC Needs Assessment Request Form and Guidance for Educational Settings
- Early Years
- Preparing for Adulthood
- Health Services
- Annual Reviews
- EHC Plan Banding Levels
- SEND Transition in Education Partnership (STEP)
- JSN4
- Fair Share Fund
- Single Route of Redress
- Special Provision Plan

**Meet the SENDCo**

Our school SENDCo is: Miss Emma Shankland.

**SHROPSHIRE BEAM**  
 Emotional wellbeing drop-in service for children and young people under 25

Who are we?  
 We're Shropshire Beam, part of The Children's Society. The Children's Society are a national charity that fight for the hope and happiness of every child and young person to achieve long-lasting change for this generation and the ones to come. Here at Beam, we hold drop-in sessions with our experienced practitioners to offer emotional support for children and young people under 25 who are registered with a GP in Shropshire or Telford and Wrekin. We also offer a range of workshops which are advertised on our Instagram account: @shropshirebeam.

To access our drop-in sessions, you don't need to book - just pop-in and one of our friendly practitioners will welcome you in!

**LOCATIONS AND TIMES**

When?	Where?	Time?
<b>Mondays</b>	Sundorne Youth Centre 218 Sundorne Road Shrewsbury SV1 4RG	12pm-4pm (last sessions held @ 3pm)
<b>Tuesdays</b>	Shropshire Beam 9 Market Square Wellington TF1 1BP	10am-6pm (last sessions held @ 5pm)
<b>Thursdays</b>	Shropshire Beam 9 Market Square Wellington TF1 1BP	10am-6pm (last sessions held @ 5pm)
<b>Saturdays</b>	Shropshire Beam 9 Market Square Wellington TF1 1BP	10am-2pm (last sessions held @ 1pm)

Visit our SEND page on our school website.

**SEND Information | - William Reynolds**  
[williamreynoldspriamary.org](http://williamreynoldspriamary.org)

**CONTACT US**

**Website:**  
[www.childrenssociety.org.uk/beamshropshire](http://www.childrenssociety.org.uk/beamshropshire)

**Instagram:** @ShropshireBeam

**Email:** [shropshirebeam@childrenssociety.org.uk](mailto:shropshirebeam@childrenssociety.org.uk)

**BeeU Children's & Family Mental Health Services**  
 Midlands Partnership NHS Foundation Trust  
 A Keele University Teaching Trust

Bee U is the emotional health and wellbeing service for people, up to the age of 25, living in Shropshire and Telford & Wrekin. Previously known as CAMHS the service offers a range of support depending on the needs of the child or young person. The services you may be offered are described briefly here or you can find out more about what help is available at <https://camhs.mpft.nhs.uk/bee>

## Headlice Reminder

Please can we ask all parents to regularly check their child's hair for headlice.

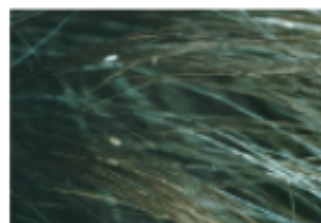
Did you know that ...

Head lice and nits are very common in young children and their families. They do not have anything to do with dirty hair and are picked up by head-to-head contact.



Head lice are small insects. They can be difficult to spot in your hair.

Head lice eggs (nits) are brown or white (empty shells) and attached to the hair.



**NHS**

**Advice**

### Head lice can make your head feel:

- itchy
- like something is moving in your hair

The only way to be sure someone has head lice is by finding live lice. You can do this by combing their hair with a special fine-toothed comb (detection comb).

### How to get rid of head lice:

- Treat head lice as soon as you spot them.
- You should check everyone in the house and start treating anyone who has head lice on the same day.

#### Wet combing:

Lice and nits can be removed by wet combing. You should try this method first.

You can buy a special fine-toothed comb (detection comb) online or from pharmacies to remove head lice and nits.

There may be instructions on the pack, but usually you:

wash hair with ordinary shampoo

apply lots of conditioner (any conditioner will do)

comb the whole head of hair, from the roots to the ends

Do wet combing on days 1, 5, 9 and 13 to catch any newly hatched head lice. Check again that everyone's hair is free of lice on day 17.

### How to get rid of head lice:

#### Medicated lotions and sprays

Ask a pharmacist for advice.

They may recommend using medicated lotions and sprays. These kill head lice in all types of hair, and you can buy them from pharmacies, supermarkets or online.

Head lice should die within a day. Some lotions and sprays come with a comb to remove dead lice and eggs.

Some treatments need to be repeated after a week to kill any newly hatched lice.

Check the pack to see if they're OK for you or your child and how to use them.

If lotions or sprays do not work, speak to a pharmacist about other treatments.





# Dates for your DIARY

Date	Year Group	Event
Tuesday 10th October	Reception, Y1, Y2, Y3, Y4, Y5 and Y6	Flu Vaccinations
Thursday 12th October	Y1	Twycross Zoo
Tuesday 17th October	Y4	Church Visit
Tuesday 17th October	Parents	NSPCC Safety Parent workshop
Thursday 26th October	Rec—2-3pm Y1 & Y2—4-5pm Y3 & Y4—5.30—6.30pm Y5 & Y6—6.45—8pm	Halloween Disco
Tuesday 7th November	All	Whole School Individual & Family Photographs
Friday 10th November	Y2	School Nurse to visit
Monday 13th November	KS2	Wizard Theatre Group in School
Monday 13th—Friday 17th November	Whole School	Anti-Bullying week— Make a Noise
Tuesday 14th November	Y3	Think Tank
Tuesday 14th November	Y2	Drama Workshop
Wednesday 15th November	Y6	Blists Hill
Thursday 16th November	Y3 and Y4	Dogs Trust Workshop
Friday 17th November	All	Children in Need
Monday 20th and Tuesday 21st November	Y4	Anglo-Saxon Day
Wednesday 22nd November	Y5	Professor McGinty

**End of Autumn Half Term: Friday 27th October 2023**

**Back to School: Monday 6th November 2023**



"To be the best that we can be"

